

# mila-wall® Modules

## "Description" of the Typical panel

### mila-wall® Series 160 wall module

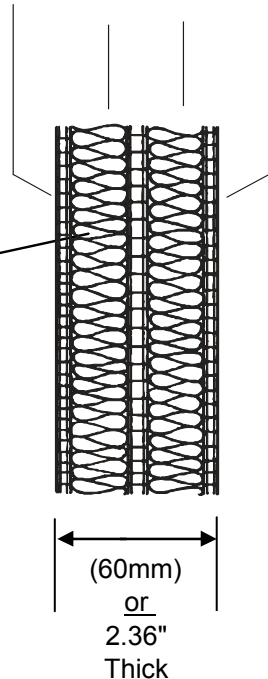
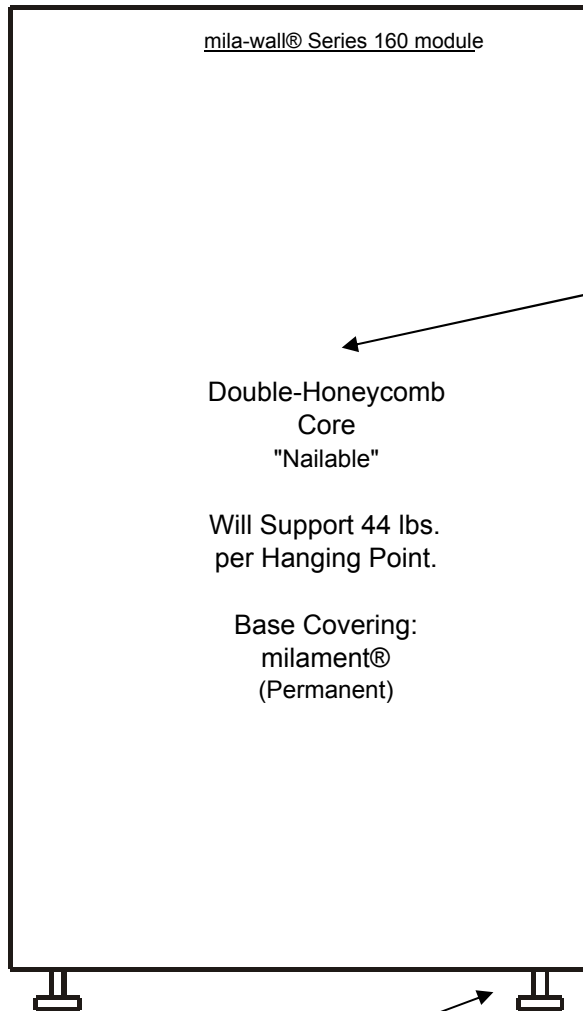
Module Construction = Groove / Groove  
Visible aluminum edge, 3/32" around module edge.

Double-Honeycomb (Nailable) Interior.  
milament® base covering, fire retardant.

**Rated for 44 lbs. per Hanging Point.**

*"All Connection Hardware is Removable"*

milament  
High Density Chipboard  
Honeycomb  
High Density Chipboard  
Honeycomb  
High Density Chipboard  
milament

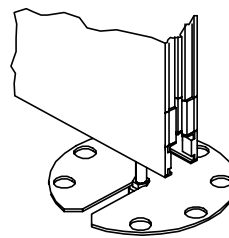


**"Nailable" Interior**  
(shown above)

**Typ. Panel Widths:**  
1000mm (39.37")  
750mm (29.53")  
500 (19.69")  
250" (9.84")

**Typ. Panel Heights:**  
3500mm (137.79")  
3000mm (118.11")  
2500 (98.42")  
2000 (78.74")

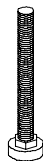
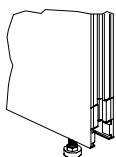
**Panel Thickness = 60mm**



Each panel includes two (2) threaded, adjustable leveling feet.

To Adjust Panel Height:  
Use MBA Leveling Disc (shown)  
or 13mm Crescent Wrench.

Adjustable  
Leveling  
Feet



**"Typical" mila-wall® Module (Series 160)**

**"Nailable - Double-Honeycomb Interior"**

MBA Design & Display Products Corp.

Telephone: (800) 635-7386

-- mila-wall®, Series 160 --

**www.mbawalls.com**

